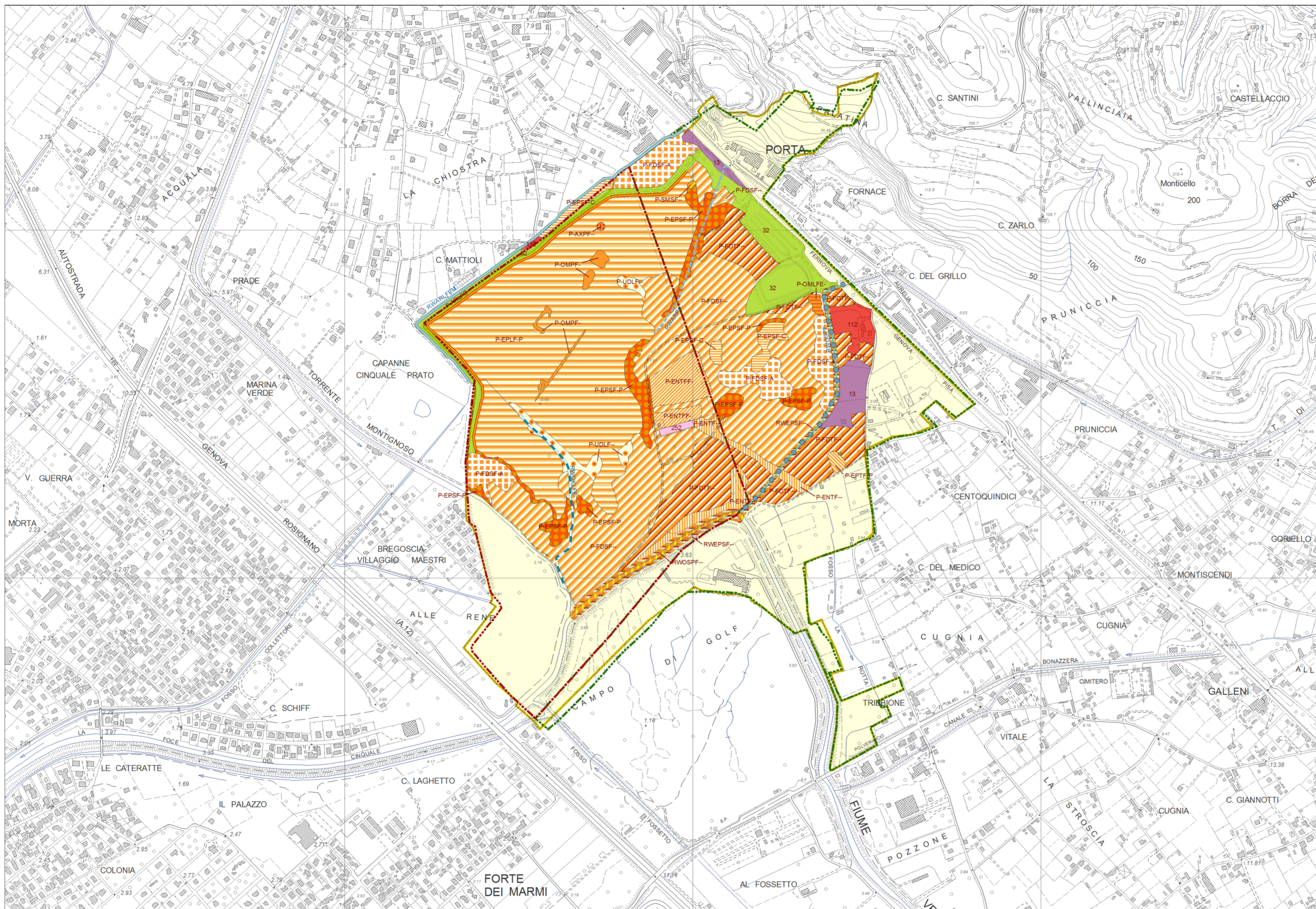


Mediterranean Wetland Inventory



Lago di Porta IT51260101



Habitat Medwet

Palustrine

- P-AXPF--
- P-ENTF--
- P-ENTFF--
- P-EPLF-P (*Phragmites australis*)
- P-EPSC-C (*Carex elata*)
- P-EPSP-P (*Phragmites australis*)
- P-EPTF-P (*Phragmites australis*)
- P-FDSF--
- P-FDSF-A (*Alnus glutinosa*)
- P-FDTF--
- P-OMLFE-
- P-OMPF-
- P-SMSF--
- P-UDLF--
- RWEPSF--
- RWOSPF--
- P-ARLFE-

Riverine

- RWARLFEM (*Myriophyllum sp.*)
- RWARPF-
- RWOKLFE-
- RWOSPF--

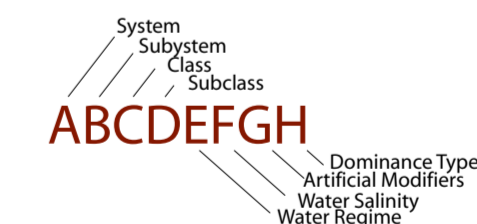
Corine Land Cover

- 1.1.2. Tessuto urbano discontinuo
- 1.3. Zone estrattive, discariche e cantieri
- 2.5.2. VIVI e colture protette
- 3.2. Vegetazione arbustiva e/o erbacea

Informazioni complementari

- Natura2000 SIR-ZPS "Lago di Porta" IT 5110022
- ANPIL "Lago di Porta"
- ANPIL "Lago e rupi di Porta"

Symbology Example:



Base Cartografica: Regione Toscana, CTR 1:10000, fogli 260020,260030
 Ortofoto: AGEA 2000, fogli 260020, 260030, 2003; it2000 Terraitaly2000 C.G.R. S.p.A. Parma 1998, foglio 260020,260030,1998
 Fotointerprete: Alessandra Sani

Scala metrica 1:10000



| M - Marine | | | | R - Riverine | | | | L - Lacustrine | | | | | | | |
|--------------------|-----------------------|-------------------------|--------------|--------------------|-----------------------|-------------------------|-----------------------|--------------------|--------------------|-----------------------|-------------------------|--------------------|--|--|--|
| O - Water surface | S - Non-Vegetated | A - Aquatic bed | R - Reef | T - Tidal | W - Lower perennial | U - Upper perennial | I - Intermittent | M - Limnetic | L - Littoral | | | | | | |
| O - Water surface | S - Non-Vegetated | A - Aquatic bed | E - Emergent | S - Non-Vegetated | O - Water surface | A - Aquatic bed | O - Water surface | S - Non-Vegetated | A - Aquatic bed | E - Emergent | | | | | |
| R - Rock | R - Rock | A - Algal | M - Mollusc | R - Rock | R - Rock | A - Algal | R - Rock | R - Rock | R - Rock | R - Rock | A - Algal | N - Non Persistent | | | |
| C - Cobbles/gravel | C - Cobbles/gravel | R - Rooted Vascular | C - Coral | C - Cobbles/gravel | C - Cobbles/gravel | R - Rooted Vascular | C - Cobbles/gravel | C - Cobbles/gravel | C - Cobbles/gravel | C - Cobbles/gravel | R - Rooted Vascular | | | | |
| S - Sand | S - Sand | Z - Unknown Subemergent | | S - Sand | S - Sand | L - Floating leaved | S - Sand | S - Sand | S - Sand | S - Sand | L - Floating leaved | | | | |
| M - Mud | M - Mud | X - Unknown Surface | | M - Mud | M - Mud | F - Floating Vascular | M - Mud | M - Mud | M - Mud | M - Mud | F - Floating vascular | | | | |
| O - Organic | O - Organic | | | O - Organic | O - Organic | Z - Unknown Subemergent | O - Organic | O - Organic | O - Organic | O - Organic | Z - Unknown Subemergent | | | | |
| K - Unknown bottom | V - Vegetated Pioneer | | | K - Unknown bottom | V - Vegetated Pioneer | X - Unknown Surface | V - Vegetated Pioneer | K - Unknown bottom | K - Unknown bottom | V - Vegetated Pioneer | X - Unknown Surface | | | | |

| E - Estuarine | | | | P - Palustrine | | | | | | | | | | |
|--------------------|-----------------------|-------------------------|--------------|--------------------|-----------------------|-------------------------|-----------------|--------------------|-----------------------|-----------------------|-------------------------|--------------------|---------------|---------------|
| O - Water surface | S - Non-Vegetated | A - Aquatic bed | R - Reef | O - Water surface | S - Non-Vegetated | A - Aquatic bed | M - Moss-Lichen | | | | | | | |
| O - Water surface | S - Non-Vegetated | A - Aquatic bed | E - Emergent | O - Water surface | S - Non-Vegetated | A - Aquatic bed | E - Emergent | | | | | | | |
| R - Rock | R - Rock | A - Algal | M - Mollusc | R - Rock | R - Rock | A - Algal | M - Moss | R - Rock | R - Rock | R - Rock | A - Algal | N - Non Persistent | D - Deciduous | D - Deciduous |
| C - Cobbles/gravel | C - Cobbles/gravel | R - Rooted Vascular | W - Worm | C - Cobbles/gravel | C - Cobbles/gravel | R - Rooted Vascular | L - Lichen | C - Cobbles/gravel | C - Cobbles/gravel | C - Cobbles/gravel | R - Rooted Vascular | | E - Evergreen | E - Evergreen |
| S - Sand | S - Sand | L - Floating leaved | C - Coral | S - Sand | S - Sand | L - Floating leaved | | S - Sand | S - Sand | S - Sand | L - Floating leaved | | A - Dead | A - Dead |
| M - Mud | M - Mud | F - Floating vascular | | M - Mud | M - Mud | F - Floating vascular | | M - Mud | M - Mud | M - Mud | F - Floating vascular | | | |
| O - Organic | O - Organic | Z - Unknown Subemergent | | O - Organic | O - Organic | Z - Unknown Subemergent | | O - Organic | O - Organic | O - Organic | Z - Unknown Subemergent | | | |
| K - Unknown bottom | V - Vegetated Pioneer | X - Unknown Surface | | K - Unknown bottom | V - Vegetated Pioneer | X - Unknown Surface | | K - Unknown bottom | V - Vegetated Pioneer | V - Vegetated Pioneer | X - Unknown Surface | | | |

| WATER REGIME MODIFIERS | | | |
|-------------------------|-------------------------------|------------------------------------|----------------------------|
| Marine/Estuarine | Fluvial/Lacustrine/Palustrine | Tidal areas | Artificially flooded areas |
| P - Permanently flooded | Non tidal areas | Tidal areas | A - Artificially flooded |
| S - Subtidal | O - Permanently flooded | P - Permanently flooded-tidal | |
| A - Irregularly exposed | L - Semi-permanently flooded | Y - Semi-permanently flooded-tidal | |
| R - Regularly exposed | S - Seasonally flooded | R - Regularly flooded-tidal | |
| G - Irregularly flooded | T - Temporarily flooded | E - Seasonally flooded-tidal | |
| U - Saturated | I - Intermittently flooded | M - Temporarily flooded-tidal | |
| | U - Saturated | | |

| SALINITY MODIFIERS | | ARTIFICIAL MODIFIERS | |
|--------------------|------------------|-------------------------------|--|
| Costal Modifiers | Inland modifiers | F - Farmed | B - Farmed - Diked/Impounded |
| F - Fresh | F - Fresh | A - Artificial substrate | C - Artificial - Excavated |
| O - Oligohaline | X - Mixosaline | S - Spoil | G - Artificial - Diked/Impounded |
| M - Mesohaline | E - Eusaline | E - Excavated | H - Artificial - Excavated - Dyked/Impounded |
| P - Polyhaline | Y - Hypersaline | D - Diked/Impounded | J - Spoil - Excavated |
| B - Mixohaline | | P - Partially Drained/Ditched | L - Spoil - Diked/Impounded |
| S - Euhaline | | | M - Spoil - Excavated - Diked/Impounded |
| H - Hyperhaline | | | N - Excavated - Diked/Impounded |