

# Mediterranean Wetland Inventory



## Lago di Sibolla IT51262301

### Habitat Medwet Palustrine

- P-OMPF--
- P-OMPF-E
- P-SMLF--
- P-SVSF--
- P-MMUF-S (*Sphagnum sp.pl.*)
- P-UDLF-A (*Amorpha fruticosa*)
- P-UDLF-S (*Salix cinerea*)
- P-UDSF-S (*Salix cinerea*)
- P-UDTF-A (*Amorpha fruticosa*)
- P-UDTF-S (*Salix cinerea*)
- P-ENF-J (*Juncus sp.pl.*)
- P-EPLF-C (*Carex elata*)
- P-EPLF-P (*Phragmites australis*)
- P-EPSF--
- P-EPSF-P (*Phragmites australis*)
- P-EPTF-P (*Phragmites australis*)
- P-FDLF-A (*Alnus Glutinosa*)
- P-FDSF-A (*Alnus Glutinosa*)
- P-FDSF-P (*Populus sp.pl.*)
- P-FDTF-P (*Populus sp.pl.*)

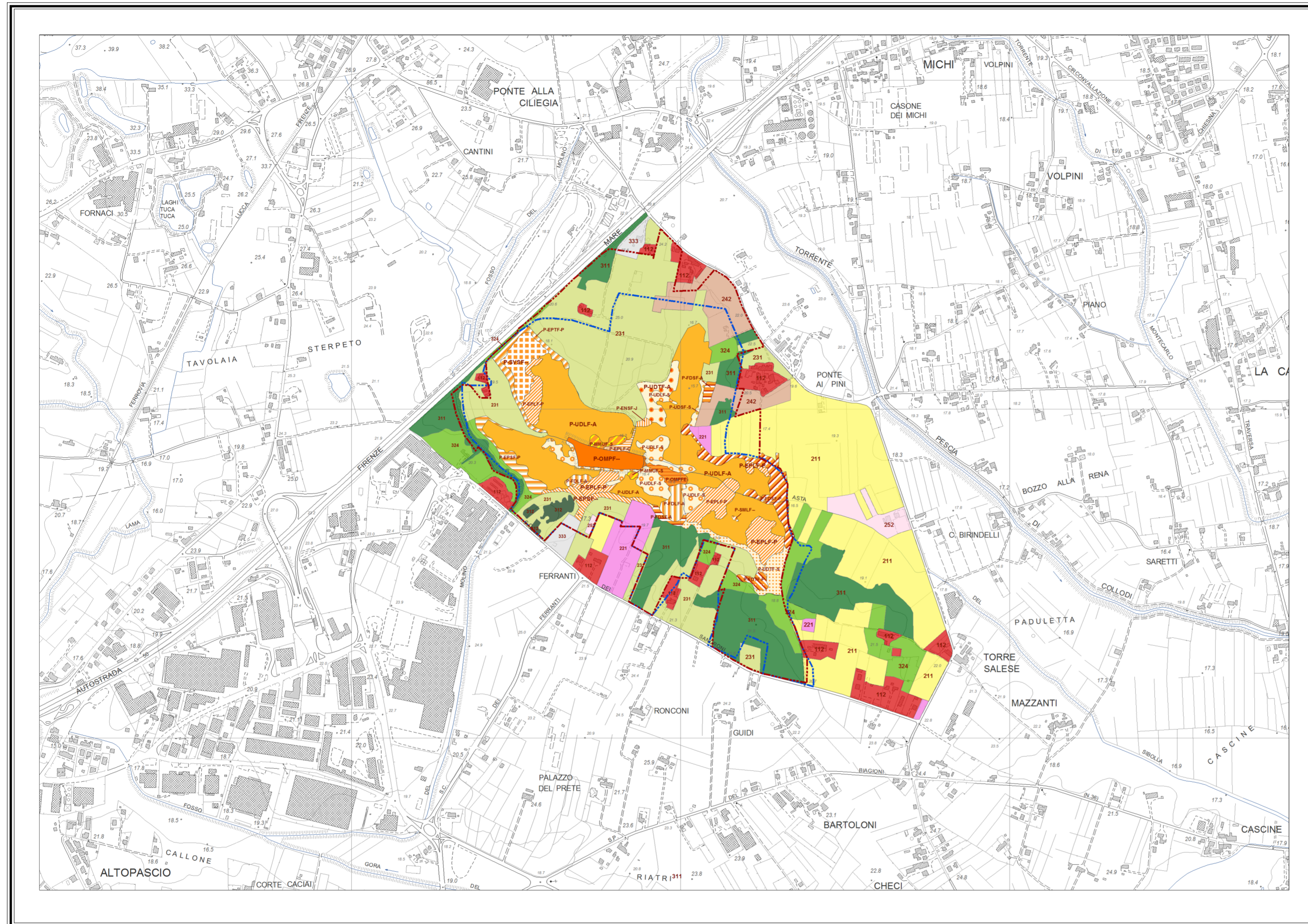
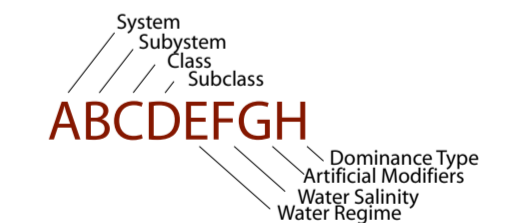
### Corine Land Cover

- 1.1.2. Tessuto urbano discontinuo
- 2.1.1. Seminativi in aree non irrigue
- 2.2.1. Vigneti
- 2.3.1. Prati stabili
- 2.4.2. Sistemi culturali e particellari complessi
- 2.5.2. Vivai e colture protette
- 3.1.1. Boschi di latifoglie
- 3.1.2. Boschi di conifere
- 3.2.4. Aree a vegetazione boschiva ed arbustiva in evoluzione
- 3.3.3. Aree con vegetazione rada

### Informazioni complementari

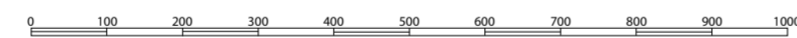
- Natura2000 SIR-pSIC "Lago di Sibolla" IT5120018
- Riserva Provinciale "Lago di Sibolla"

### Symbology Example:



Base Cartografica: Regione Toscana, CTR 1:10000, foglio 262130  
 Ortofoto: AGEA 2002, foglio 262130, anno 2002.  
 Fotointerprete: Alessandra Sani

Scala metrica 1:10000



M - Marine				R - Riverine				L - Lacustrine					
<b>O - Water surface</b>	<b>S - Non-Vegetated</b>	<b>A - Aquatic bed</b>	<b>R - Reef</b>	<b>T - Tidal</b>	<b>W - Lower perennial</b>	<b>U - Upper perennial</b>	<b>I - Intermittent</b>	<b>M - Limnetic</b>	<b>L - Littoral</b>	<b>O - Water surface</b>	<b>S - Non-Vegetated</b>	<b>A - Aquatic bed</b>	<b>E - Emergent</b>
R - Rock	R - Rock	A - Algal	M - Mollusc	R - Rock	R - Rock	A - Algal	N - Non Persistent	R - Rock	R - Rock	R - Rock	R - Rock	A - Algal	N - Non Persistent
C - Cobbles/gravel	C - Cobbles/gravel	R - Rooted Vascular	W - Worm	C - Cobbles/gravel	C - Cobbles/gravel	R - Rooted Vascular	C - Cobbles/gravel	C - Cobbles/gravel	C - Cobbles/gravel	C - Cobbles/gravel	C - Cobbles/gravel	R - Rooted Vascular	R - Rooted Vascular
S - Sand	S - Sand	Z - Unknown Subemergent	C - Coral	S - Sand	S - Sand	L - Floating leaved	S - Sand	S - Sand	S - Sand	S - Sand	S - Sand	L - Floating leaved	L - Floating leaved
M - Mud	M - Mud	X - Unknown Surface		M - Mud	M - Mud	F - Floating vascular	M - Mud	M - Mud	M - Mud	M - Mud	M - Mud	F - Floating vascular	F - Floating vascular
O - Organic	O - Organic			O - Organic	O - Organic	Z - Unknown Subemergent	O - Organic	O - Organic	O - Organic	O - Organic	O - Organic	Z - Unknown Subemergent	Z - Unknown Subemergent
K - Unknown bottom	V - Vegetated Pioneer			K - Unknown bottom	V - Vegetated Pioneer	X - Unknown Surface	V - Vegetated Pioneer	K - Unknown bottom	K - Unknown bottom	K - Unknown bottom	K - Unknown bottom	X - Unknown Surface	X - Unknown Surface

E - Estuarine						P - Palustrine							
<b>O - Water surface</b>	<b>S - Non-Vegetated</b>	<b>A - Aquatic bed</b>	<b>R - Reef</b>	<b>E - Emergent</b>	<b>U - Scrub/Shrub</b>	<b>F - Forest</b>	<b>O - Water surface</b>	<b>S - Non-Vegetated</b>	<b>A - Aquatic bed</b>	<b>M - Moss-Lichen</b>	<b>E - Emergent</b>	<b>U - Scrub/Shrub</b>	<b>F - Forest</b>
R - Rock	R - Rock	A - Algal	M - Mollusc	P - Persistent	D - Deciduous	D - Deciduous	R - Rock	R - Rock	A - Algal	M - Moss	P - Persistent	D - Deciduous	D - Deciduous
C - Cobbles/gravel	C - Cobbles/gravel	R - Rooted Vascular	W - Worm	N - Non Persistent	E - Evergreen	E - Evergreen	C - Cobbles/gravel	C - Cobbles/gravel	R - Rooted Vascular	L - Lichen	N - Non Persistent	E - Evergreen	E - Evergreen
S - Sand	S - Sand	L - Floating leaved	C - Coral	A - Dead	A - Dead	A - Dead	S - Sand	S - Sand	L - Floating leaved	A - Dead	A - Dead	A - Dead	A - Dead
M - Mud	M - Mud	F - Floating vascular					M - Mud	M - Mud	F - Floating vascular				
O - Organic	O - Organic	Z - Unknown Subemergent					O - Organic	O - Organic	Z - Unknown Subemergent				
K - Unknown bottom	V - Vegetated Pioneer	X - Unknown Surface					K - Unknown bottom	V - Vegetated Pioneer	X - Unknown Surface				

WATER REGIME MODIFIERS		
<b>Marine/Estuarine</b>	<b>Fluvial/Lacustrine/Palustrine</b>	<b>Artificially flooded areas</b>
P - Permanently flooded	Non tidal areas	A - Artificially flooded
S - Subtidal	Tidal areas	
A - Irregularly exposed	O - Permanently flooded	P - Permanently flooded-tidal
R - Regularly exposed	L - Semi-permanently flooded	Y - Semi-permanently flooded-tidal
G - Irregularly flooded	S - Seasonally flooded	R - Regularly flooded-tidal
U - Saturated	T - Temporarily flooded	E - Seasonally flooded-tidal
	I - Intermittently flooded	M - Temporarily flooded-tidal
	U - Saturated	

SALINITY MODIFIERS		ARTIFICIAL MODIFIERS	
<b>Costal Modifiers</b>	<b>Inland modifiers</b>	F - Farmed	B - Farmed - Diked/Impounded
F - Fresh	F - Fresh	A - Artificial substrate	C - Artificial - Excavated
O - Oligohaline	X - Mixosaline	S - Spoil	G - Artificial - Diked/Impounded
M - Mesohaline	E - Eusaline	E - Excavated	H - Artificial - Excavated - Dyked/Impounded
P - Polyhaline	Y - Hypersaline	D - Diked/Impounded	J - Spoil - Excavated
B - Mixohaline		P - Partially Drained/Ditched	L - Spoil - Diked/Impounded
S - Eusaline		M - Spoil - Excavated - Diked/Impounded	M - Spoil - Excavated - Diked/Impounded
H - Hyperhaline		N - Excavated - Diked/Impounded	N - Excavated - Diked/Impounded