

## Mediterranean Wetland Inventory



### Bosco del Tanali IT51273102

#### Habitat Medwet Palustrine

- P-ARSN-
- P-ENTFF-
- P-EPSP-P (*Phragmites australis*)
- P-EPSPDC (*Carex elata*)
- P-EPSPDP (*Phragmites australis*)
- P-EPTF--
- P-EPTF-P (*Phragmites australis*)
- P-FDSF--
- P-FDSF-A (*Alnus glutinosa*)
- P-FDSF-S (*Salix alba*)
- P-FDTF (*Populus alba*)
- P-FDTF-A (*Alnus glutinosa*)
- P-UDSF-S (*Salix cinerea*)

#### Riverine

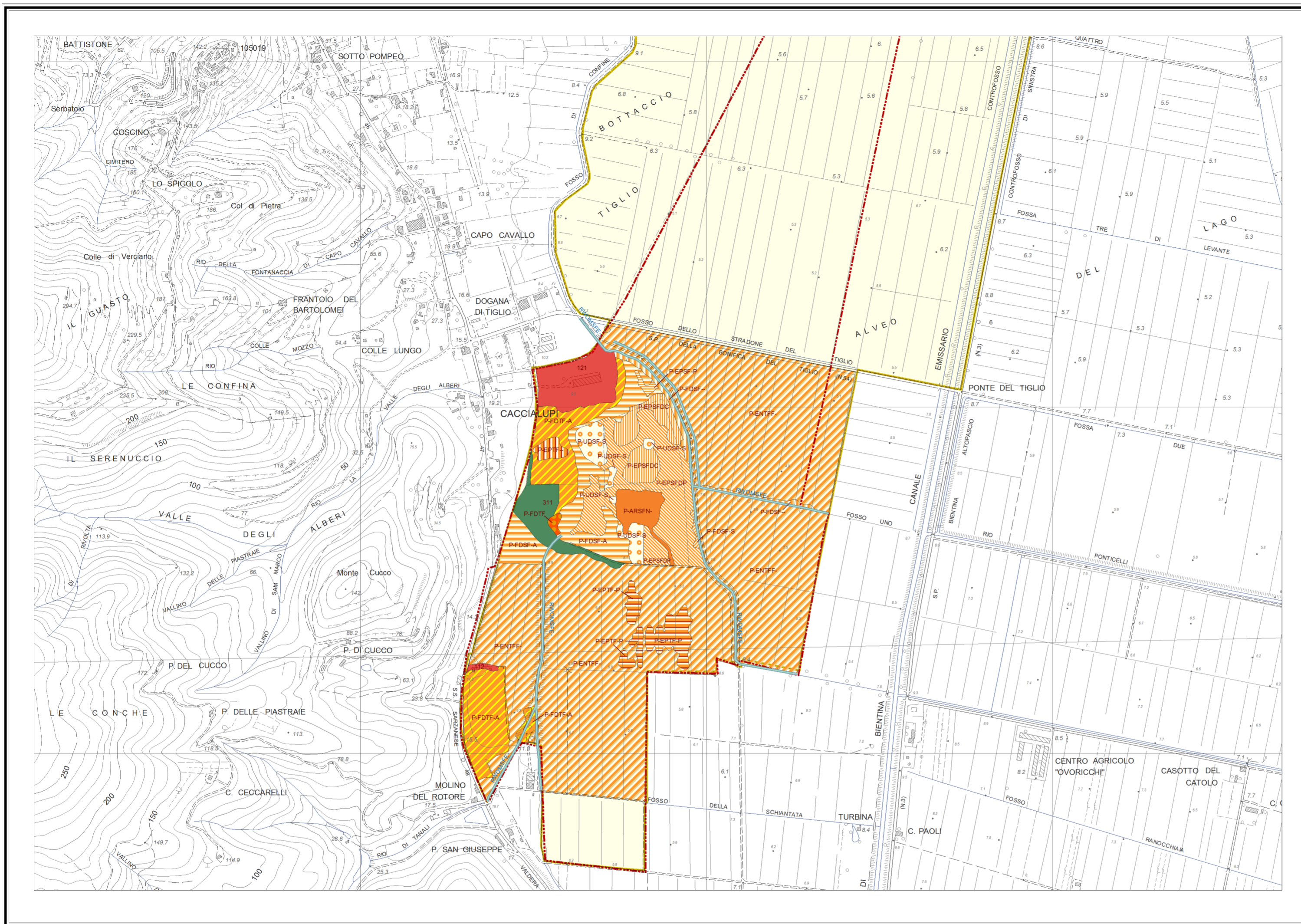
- RWOMSFE-

#### Corine Land Cover

- 1.1.2. Tessuto urbano discontinuo
- 1.2.1. Aree industriali o commerciali
- 3.1.1. Boschi di latifoglie

#### Informazioni complementari

- Anpil "Bosco di Tanali"
- Natura2000 SIR "Ex alveo del Lago di Bientina" IT 5120101

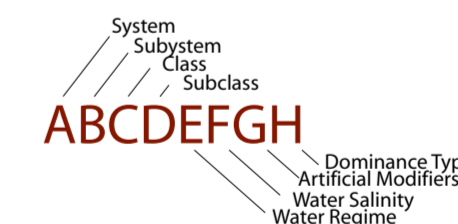


Base Cartografica: Regione Toscana, CTR 1:10000, fogli 273040-273080  
 Ortofoto: AGEA 2000, foglio 273040-273080, 2003; it2000 Terraitaly2000 C.G.R. S.p.A. Parma, fogli 273040-273080, 1998  
 Fotointerprete: Alessandra Sani



<p><b>M - Marine</b></p> <p><b>O - Water surface</b>   <b>S - Non-Vegetated</b>   <b>A - Aquatic bed</b>   <b>R - Reef</b></p> <p>R - Rock   R - Rock   A - Algal   M - Mollusc        C - Cobbles/gravel   C - Cobbles/gravel   R - Rooted Vascular   W - Worm        S - Sand   S - Sand   Z - Unknown Subemergent   C - Coral        M - Mud   M - Mud   X - Unknown Surface        O - Organic   O - Organic        K - Unknown bottom   V - Vegetated Pioneer</p>	<p><b>R - Riverine</b></p> <p><b>T - Tidal</b>   <b>W - Lower perennial</b>   <b>U - Upper perennial</b>   <b>I - Intermittent</b></p> <p><b>O - Water surface</b>   <b>S - Non-Vegetated</b>   <b>A - Aquatic bed</b>   <b>E - Emergent</b>   <b>N - Non Persistent</b></p> <p>R - Rock   R - Rock   A - Algal   N - Non Persistent   R - Rock        C - Cobbles/gravel   C - Cobbles/gravel   C - Cobbles/gravel   C - Cobbles/gravel   C - Cobbles/gravel        S - Sand   S - Sand   L - Floating leaved   S - Sand   S - Sand        M - Mud   M - Mud   F - Floating vascular   M - Mud   M - Mud        O - Organic   O - Organic   Z - Unknown Subemergent   O - Organic   O - Organic        K - Unknown bottom   V - Vegetated Pioneer   X - Unknown Surface   V - Vegetated Pioneer   V - Vegetated Pioneer</p>	<p><b>L - Lacustrine</b></p> <p><b>M - Limnetic</b>   <b>L - Littoral</b></p> <p><b>O - Water surface</b>   <b>A - Aquatic bed</b>   <b>O - Water surface</b>   <b>S - Non-Vegetated</b>   <b>A - Aquatic bed</b>   <b>E - Emergent</b></p> <p>R - Rock   A - Algal   R - Rock   R - Rock   A - Algal   N - Non Persistent        C - Cobbles/gravel   R - Rooted Vascular   C - Cobbles/gravel   R - Rooted Vascular   R - Rooted Vascular        S - Sand   L - Floating leaved   S - Sand   S - Sand   L - Floating leaved        M - Mud   F - Floating vascular   M - Mud   M - Mud   F - Floating vascular        O - Organic   Z - Unknown Subemergent   O - Organic   O - Organic   F - Floating vascular        K - Unknown bottom   X - Unknown Surface   K - Unknown bottom   V - Vegetated Pioneer   S - Salt crust   Z - Unknown Subemergent        X - Unknown Surface   X - Unknown Surface</p>	<p><b>E - Estuarine</b></p> <p><b>O - Water surface</b>   <b>S - Non-Vegetated</b>   <b>A - Aquatic bed</b>   <b>R - Reef</b>   <b>E - Emergent</b>   <b>U - Scrub/Shrub</b>   <b>F - Forest</b></p> <p>R - Rock   R - Rock   A - Algal   M - Mollusc   P - Persistent   D - Deciduous   D - Deciduous        C - Cobbles/gravel   C - Cobbles/gravel   R - Rooted Vascular   W - Worm   N - Non Persistent   E - Evergreen   E - Evergreen        S - Sand   S - Sand   L - Floating leaved   C - Coral   A - Dead   A - Dead        M - Mud   M - Mud   F - Floating vascular        O - Organic   O - Organic        K - Unknown bottom   V - Vegetated Pioneer   Z - Unknown Subemergent   X - Unknown Surface</p>	<p><b>P - Palustrine</b></p> <p><b>O - Water surface</b>   <b>S - Non-Vegetated</b>   <b>A - Aquatic bed</b>   <b>M - Moss-Lichen</b>   <b>E - Emergent</b>   <b>U - Scrub/Shrub</b>   <b>F - Forest</b></p> <p>R - Rock   R - Rock   A - Algal   M - Moss   P - Persistent   D - Deciduous   D - Deciduous        C - Cobbles/gravel   C - Cobbles/gravel   R - Rooted Vascular   L - Lichen   N - Non Persistent   E - Evergreen   E - Evergreen        S - Sand   S - Sand   L - Floating leaved   A - Dead   A - Dead        M - Mud   M - Mud   F - Floating vascular        O - Organic   O - Organic   Z - Unknown Subemergent   X - Unknown Surface</p>
--	--	--	--	---

#### Symbology Example:



<p><b>Marine/Estuarine</b></p> <p>P - Permanently flooded        S - Subtidal        A - Irregularly exposed        R - Regularly exposed        G - Irregularly flooded        U - Saturated</p>	<p><b>Fluvial/Lacustrine/Palustrine</b></p> <p>O - Permanently flooded        L - Semi-permanently flooded        S - Seasonally flooded        T - Temporarily flooded        I - Intermittently flooded        U - Saturated</p>	<p><b>Artificially flooded areas</b></p> <p>A - Artificially flooded        P - Permanently flooded-tidal        Y - Semi-permanently flooded-tidal        R - Regularly flooded-tidal        E - Seasonally flooded-tidal        M - Temporarily flooded-tidal        U - Saturated</p>
<p><b>SALINITY MODIFIERS</b></p> <p><b>Costal Modifiers</b></p> <p>F - Fresh        O - Oligohaline        M - Mesohaline        P - Polyhaline        B - Mixohaline        S - Euhaline        H - Hyperhaline</p>	<p><b>Inland modifiers</b></p> <p>F - Fresh        X - Mixosaline        E - Eusaline        Y - Hypersaline</p>	<p><b>ARTIFICIAL MODIFIERS</b></p> <p>F - Farmed        A - Artificial substrate        S - Spoil        E - Excavated        D - Diked/Impounded        P - Partially Drained/Ditched        H - Hyperhaline</p>